

# PLANTER 300

Size 33

**BENKERTBÄNKE**



# PLANTER 300

Size 33

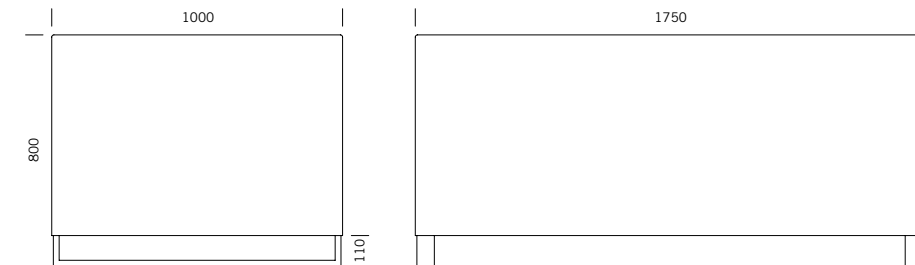
# BENKERTBÄNKE

## GROUND ANCHOR

Free positioning

## DIMENSIONS

Length:	1750 mm
Width:	1000 mm
Height:	800 mm
Capacity:	1208 L
Weight:	120 kg



## FRAME

Stainless steel type 304 | powder-coated



## BASES

Choice of 4 different bases

Three of the bases are suitable for forklift transportation and can be driven under with a fork.

1. Straight corner feet



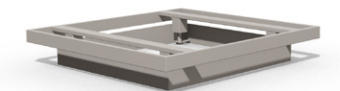
2. Angled corner feet



3. Skid-base



4. Platform with stepless levelling function



We recommend lifting straps for safe transportation of this base.

## FEATURES

Tree anchors in all 4 corners

## OPTIONAL FEATURES

Plant Care System

# PLANTER 300

Size 33

BENKERTBÄNKE

## PLANT CARE SYSTEM

For optimum plant care.

Optionally available for every planter.

### 1. Water reservoir

Stop-end system as intermediate shelf

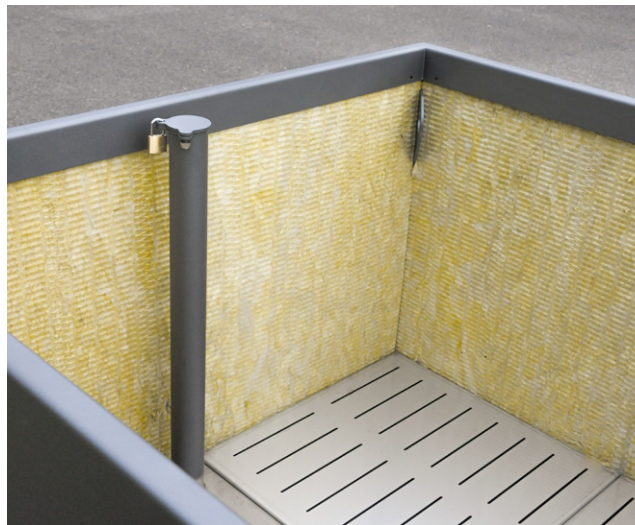
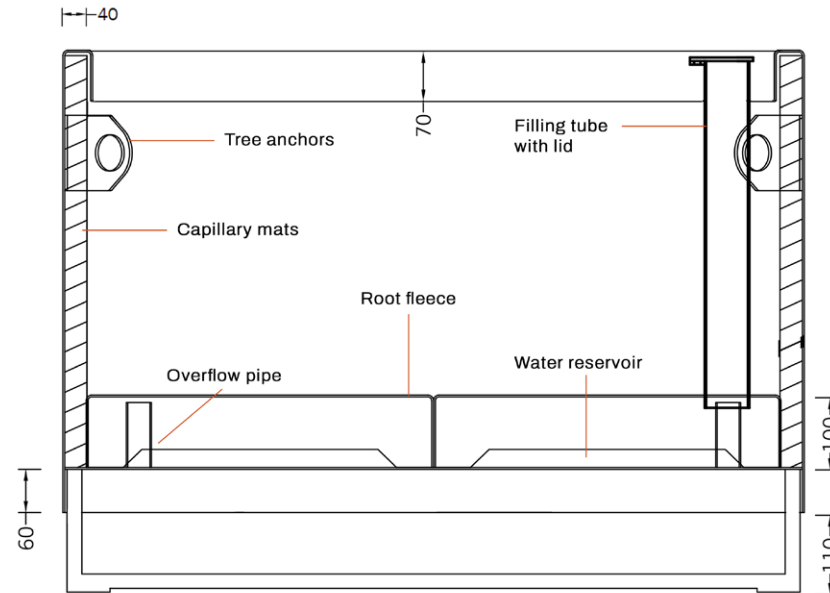
Water overflow with a height of approx. 100 mm

Filling tube with lid for manual filling of the reservoir

Root fleece over the reservoir to prevent dirt in the water

### 2. Interior wall panelling

Capillary plant mats on the sides improve the water supply in the upper area and also serve as heat and frost protection.





# PLANTER 300

Size 33

BENKERTBÄNKE

## ONE POT PARK

Customised looks can be created using the design covers that are easy to attach to the side walls. Play with colours and design multi-coloured planters to suit your taste. Benches, litter bins and bike stands can also be attached to these design covers, creating our versatile „One Pot Park“.

