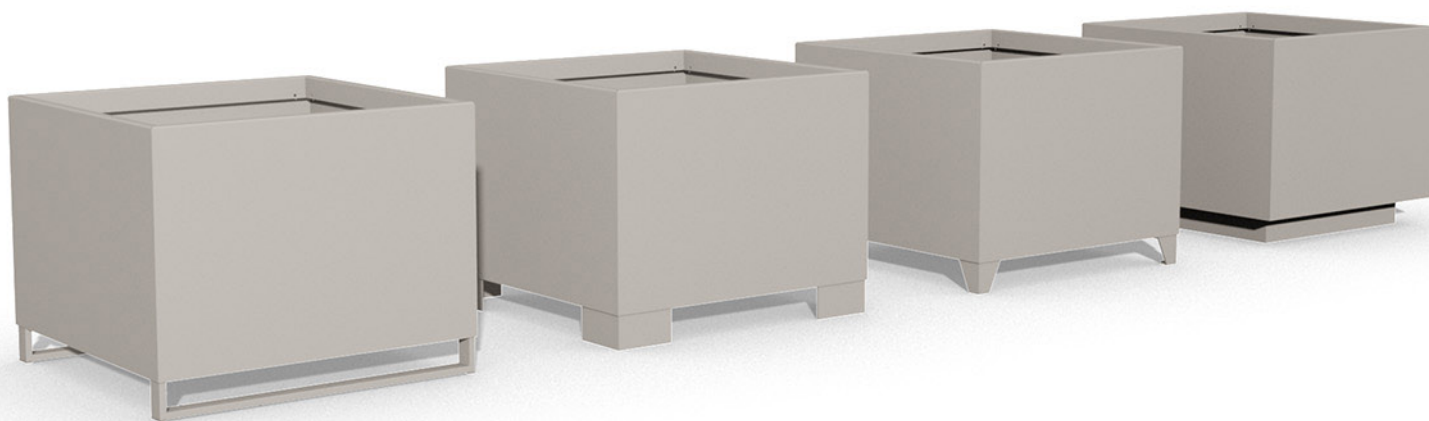


PLANTER 300

Size 08

BENKERTBÄNKE



PLANTER 300

Size 08

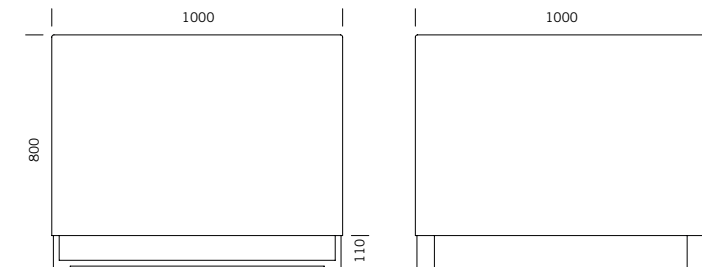
BENKERTBÄNKE

GROUND ANCHOR

Free positioning

DIMENSIONS

Length:	1000 mm
Width:	1000 mm
Height:	800 mm
Capacity:	690 L
Weight:	85 kg



FRAME

Stainless steel type 304 | powder-coated



BASES

Choice of 4 different bases

Three of the bases are suitable for forklift transportation and can be driven under with a fork.

1. Straight corner feet



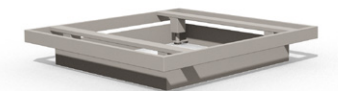
2. Angled corner feet



3. Skid-base



4. Platform with stepless levelling function



We recommend lifting straps for safe transportation of this base.

FEATURES

Tree anchors in all 4 corners

OPTIONAL FEATURES

Plant Care System

PLANTER 300

Size 08

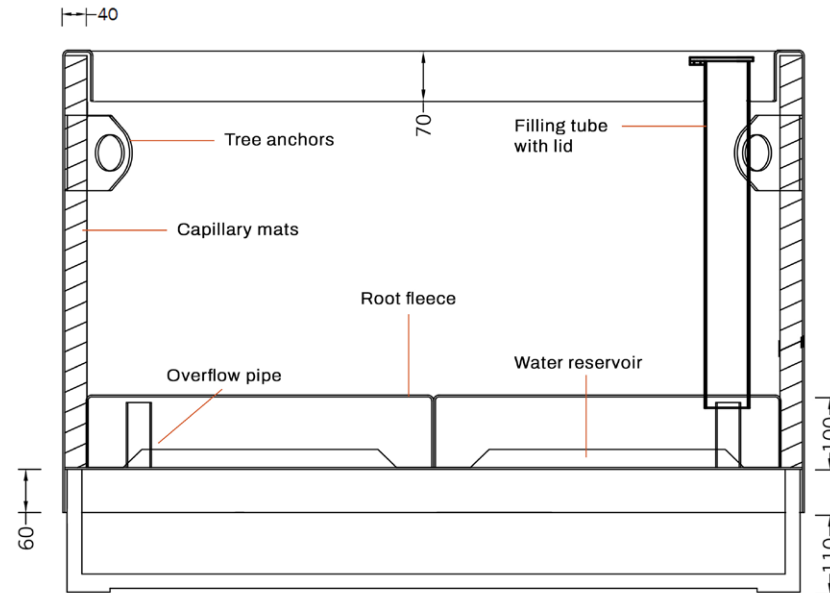
BENKERTBÄNKE

PLANT CARE SYSTEM

For optimum plant care.
Optionally available for every planter.

1. Water reservoir
Stop-end system as intermediate shelf
Water overflow with a height of approx. 100 mm
Filling tube with lid for manual filling of the reservoir
Root fleece over the reservoir to prevent dirt in the water

2. Interior wall panelling
Capillary plant mats on the sides improve the water supply in the upper area and also serve as heat and frost protection.



PLANTER 300

Size 08

BENKERTBÄNKE

ONE POT PARK

Customised looks can be created using the design covers that are easy to attach to the side walls. Play with colours and design multi-coloured planters to suit your taste. Benches, litter bins and bike stands can also be attached to these design covers, creating our versatile „One Pot Park“.

