

SIARDO S20R

Stool bench

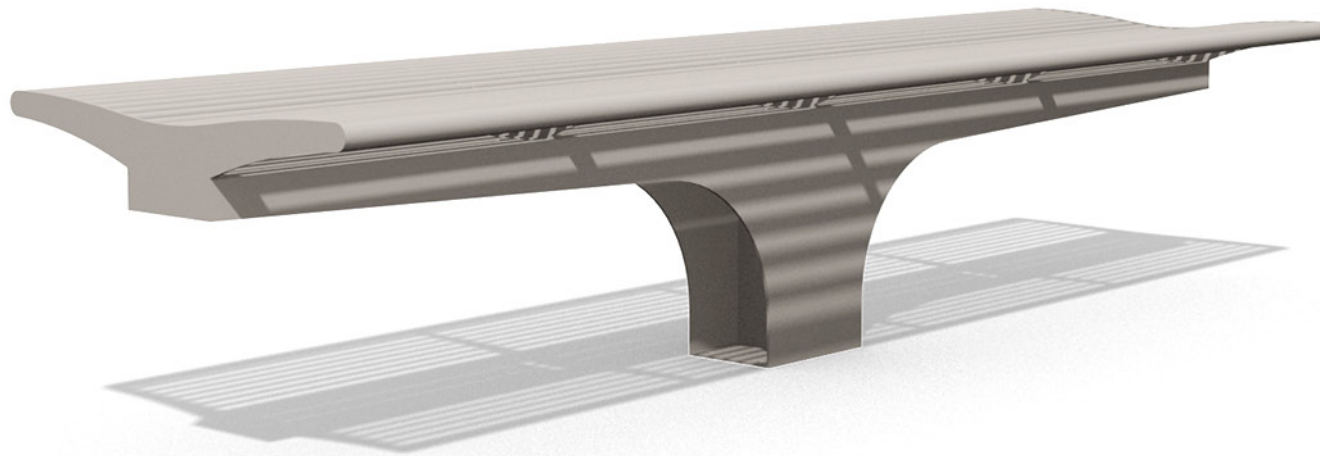
BENKERTBÄNKE



SIARDO S20R

Stool bench

BENKERTBÄNKE



SIARDO S20R

Stool bench

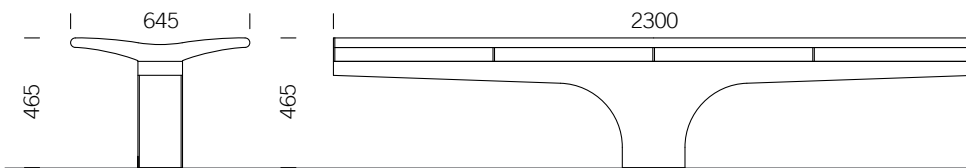
BENKERTBÄNKE

GROUND ANCHOR

1. Concrete-in, installation depth 600 mm

DIMENSIONS

Length: 2300 mm
Width: 645 mm
Height: 465 mm
Seat height: 465 mm
Weight: ca. 70 kg



FRAME

Stainless steel type 304 | powder-coated

SEAT

Stainless steel type 304 | round tubes Ø16mm

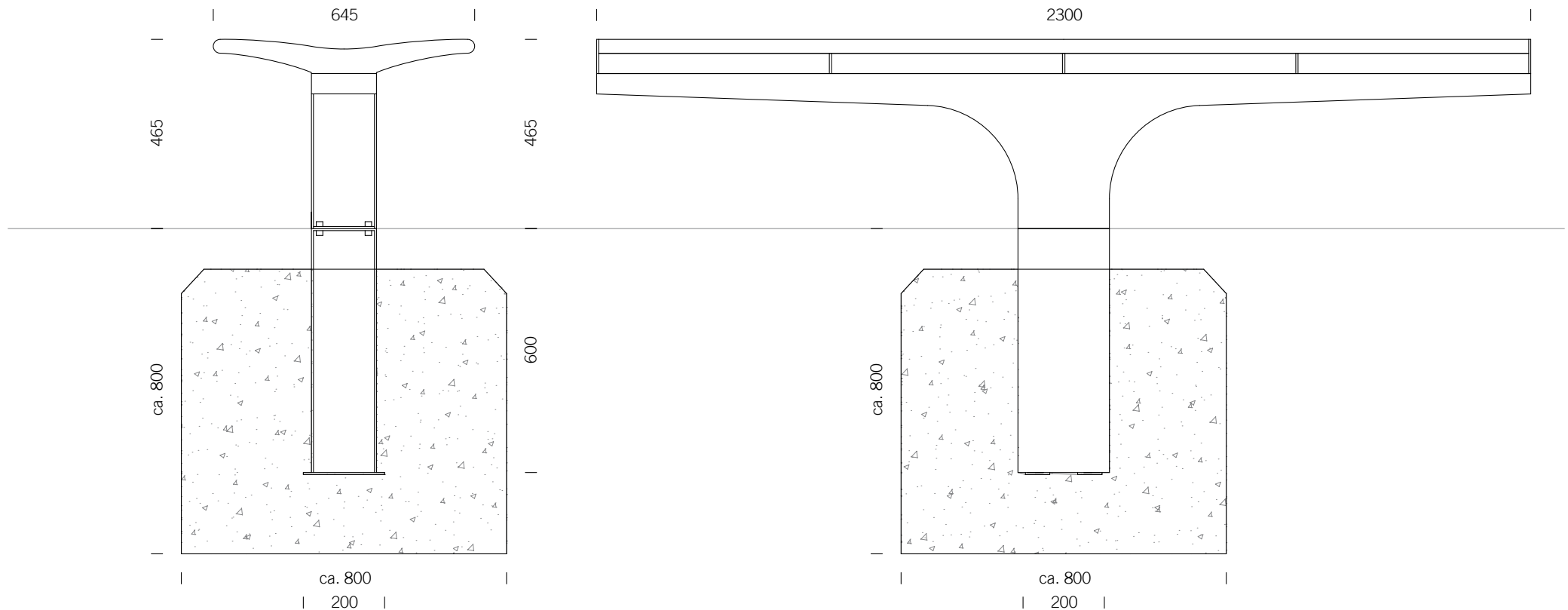


SIARDO S20R

Stool bench

BENKERTBÄNKE

GROUND ANCHOR CONCRETE-IN, INSTALLATION DEPTH 600 MM



Foundations depend on local conditions - This is only a suggestion without warranty