

SIARDO 30R

Stool bench 1800

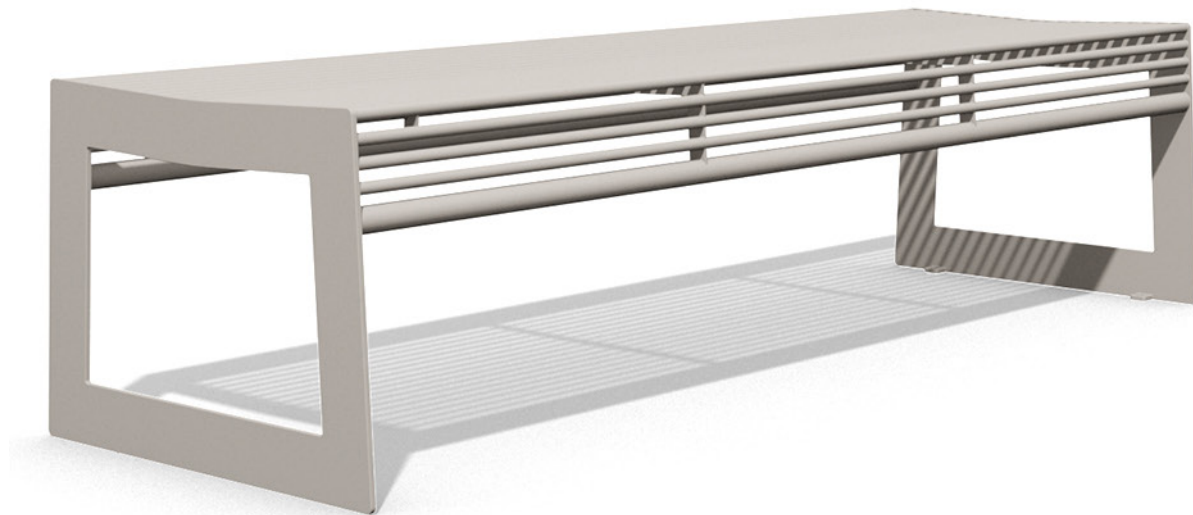
BENKERTBÄNKE



SIARDO 30R

Stool bench 1800

BENKERTBÄNKE



SIARDO 30R

Stool bench 1800

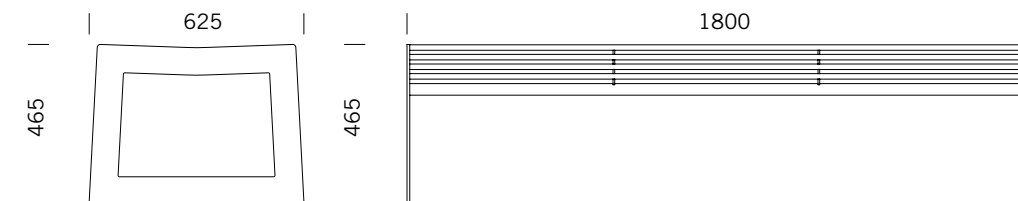
BENKERTBÄNKE

GROUND ANCHOR

1. Concrete-in, installation depth 250 mm
2. Bolt-on, installation depth 80 mm

DIMENSIONS

Length:	1800 mm
Width:	625 mm
Height:	465 mm
Seat height:	465 mm
Weight:	51 kg



FRAME

Stainless steel type 304 | powder-coated

SEAT

Stainless steel type 304 | round tubes Ø16mm



SIARDO 30R

Stool bench 1800

BENKERTBÄNKE

GROUND ANCHOR CONCRETE-IN, INSTALLATION DEPTH 250 MM



Foundations depend on local conditions - This is only a suggestion without warranty

SIARDO 30R

Stool bench 1800

BENKERTBÄNKE

GROUND ANCHOR BOLT-ON, INSTALLATION DEPTH 80 MM



Foundations depend on local conditions - This is only a suggestion without warranty