

# SIARDO 20R

Stool bench 1800

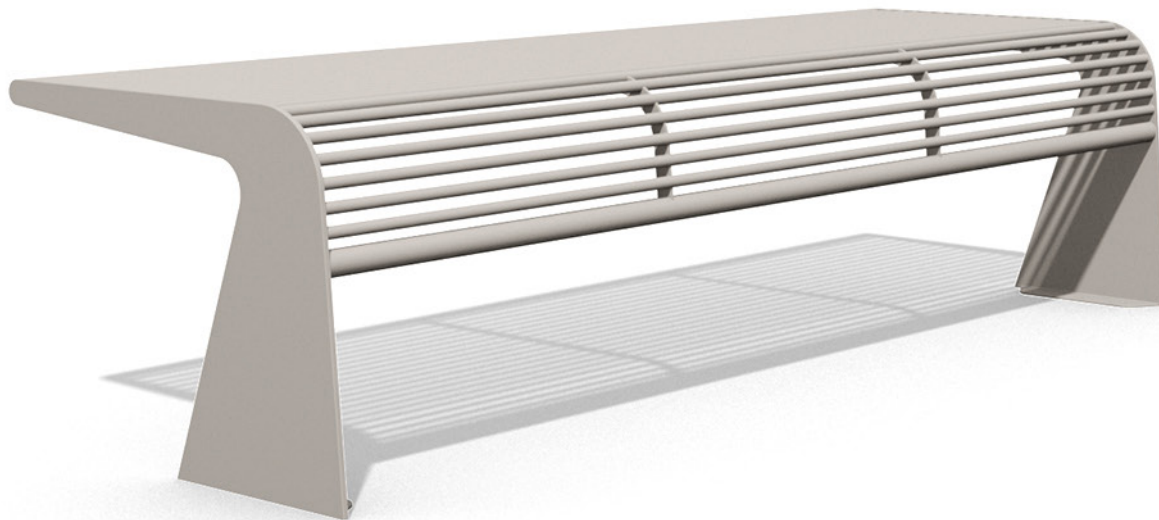
BENKERTBÄNKE



# SIARDO 20R

Stool bench 1800

BENKERTBÄNKE



# SIARDO 20R

Stool bench 1800

# BENKERTBÄNKE

## GROUND ANCHOR

1. Concrete-in, installation depth 250 mm
2. Bolt-on, installation depth 80 mm

## DIMENSIONS

Length:	1800 mm
Width:	465 mm
Height:	465 mm
Seat height:	465 mm
Weight:	44 kg



## FRAME

Stainless steel type 304 | powder-coated

## SEAT

Stainless steel type 304 | round tubes Ø16mm

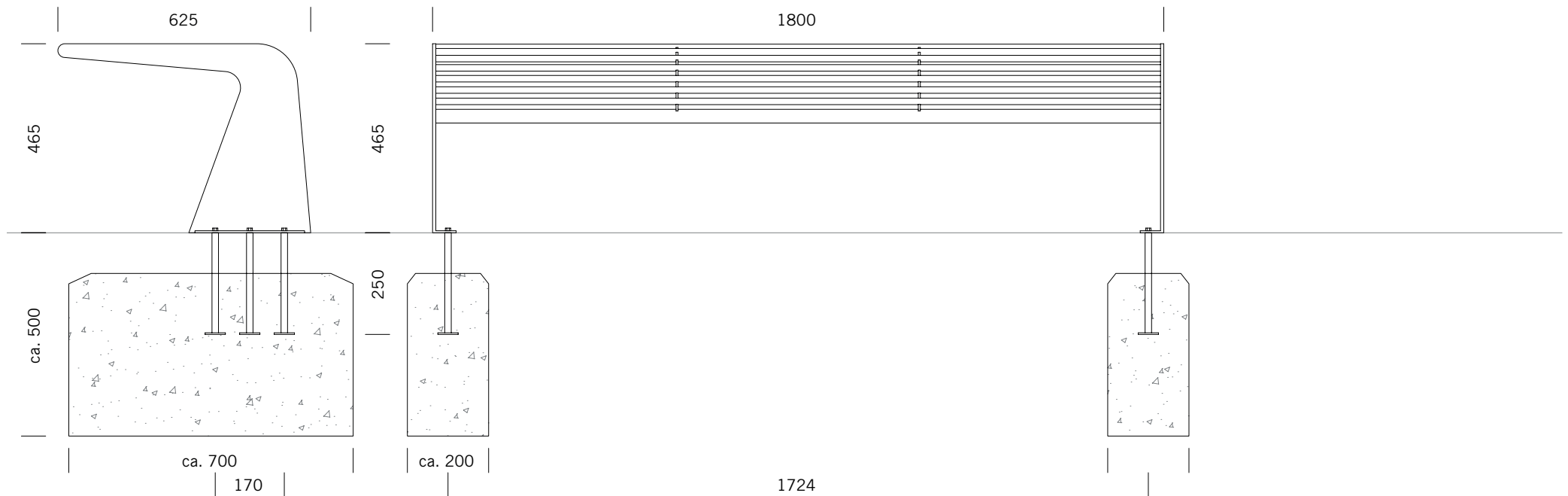


# SIARDO 20R

Stool bench 1800

BENKERTBÄNKE

GROUND ANCHOR CONCRETE-IN, INSTALLATION DEPTH 250 MM



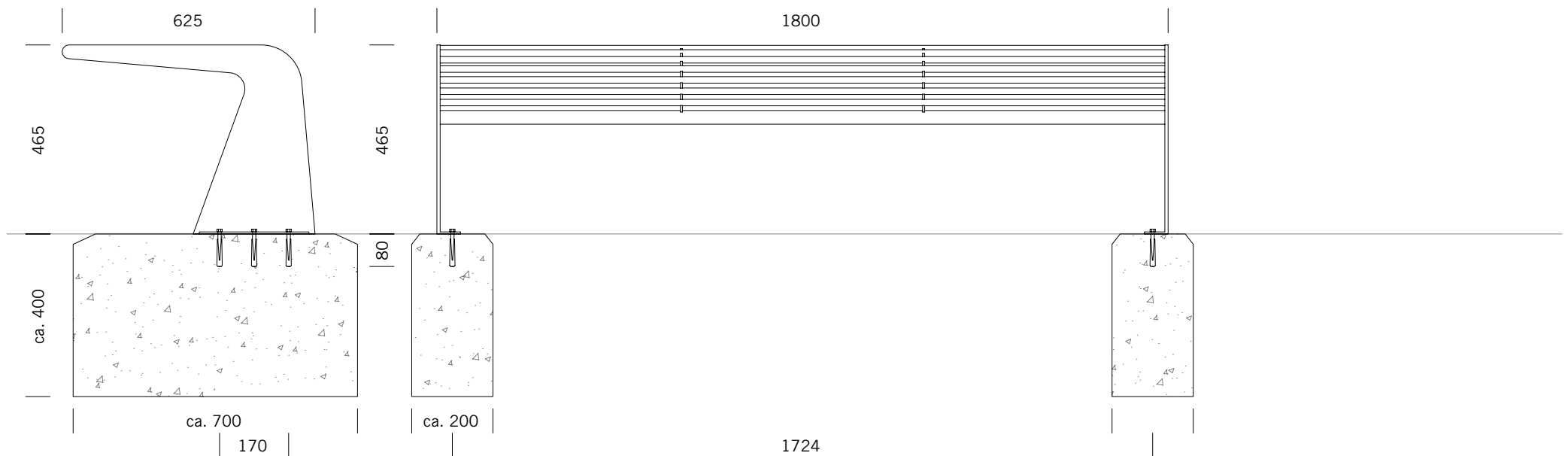
Foundations depend on local conditions - This is only a suggestion without warranty

# SIARDO 20R

Stool bench 1800

BENKERTBÄNKE

GROUND ANCHOR BOLT-ON, INSTALLATION DEPTH 80 MM



Foundations depend on local conditions - This is only a suggestion without warranty