

SIARDO 140R

Stool bench

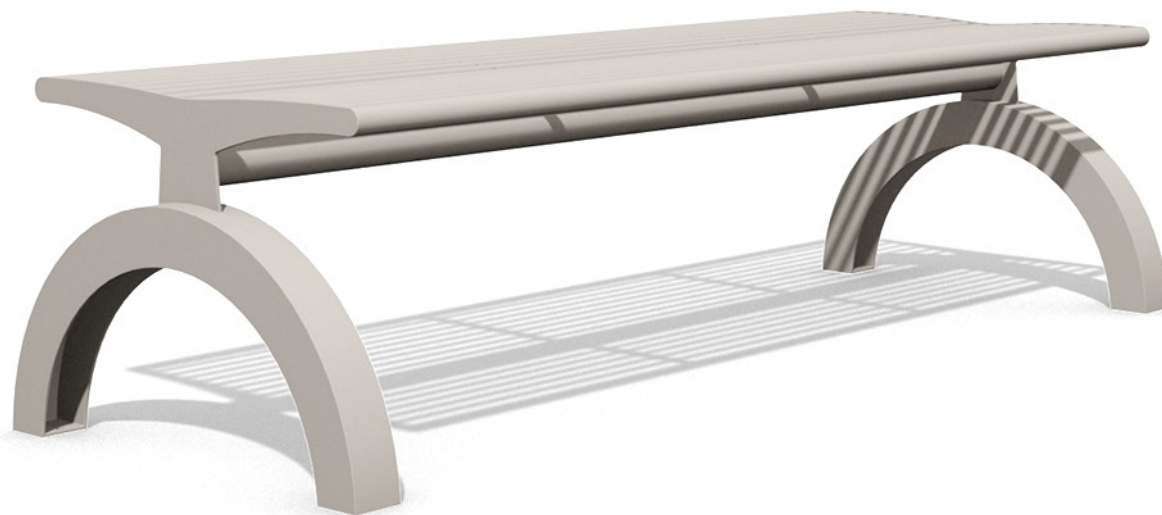
BENKERTBÄNKE



SIARDO 140R

Stool bench

BENKERTBÄNKE



SIARDO 140R

Stool bench

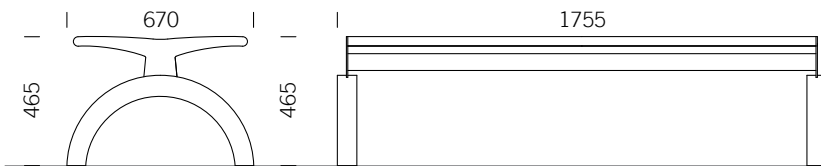
BENKERTBÄNKE

GROUND ANCHOR

1. Concrete-in, installation depth 250 mm
2. Bolt-on, installation depth 80 mm

DIMENSIONS

Length:	1755 mm
Width:	670 mm
Height:	465 mm
Seat height:	465 mm
Weight:	ca. 60 kg



FRAME

Stainless steel type 304 | powder-coated

SEAT

Stainless steel type 304 | round tubes Ø16mm

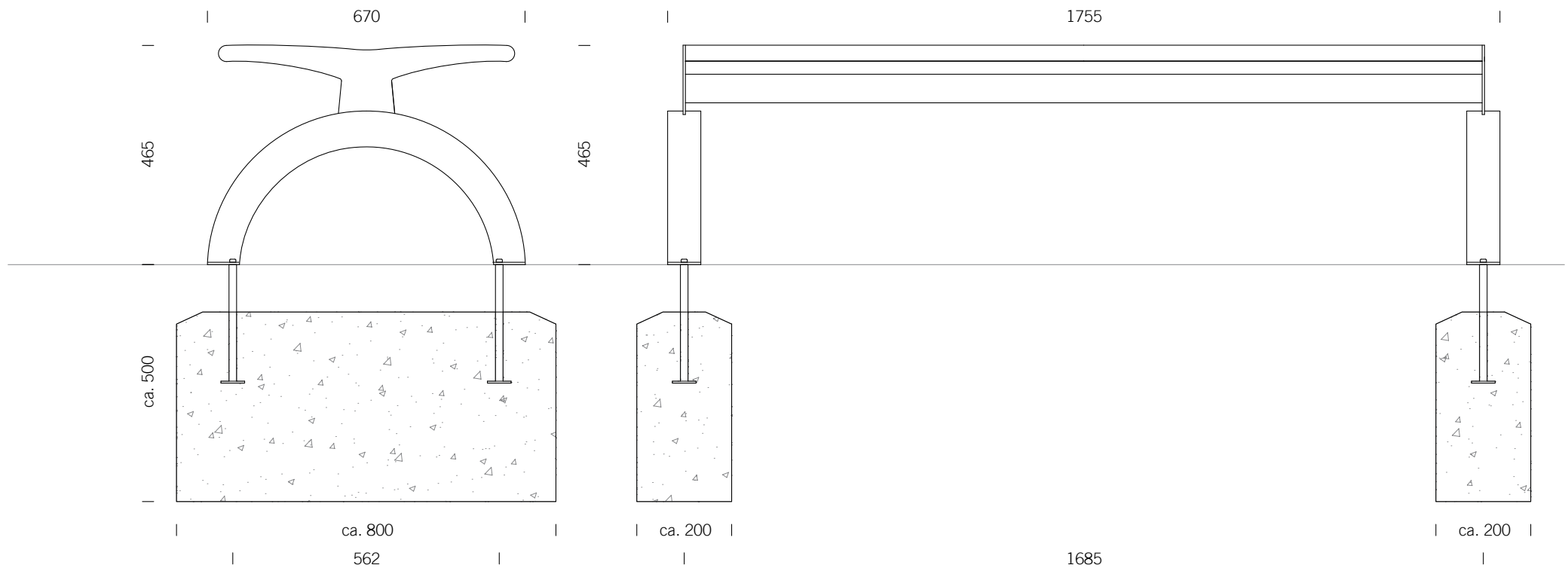


SIARDO 140R

Stool bench

BENKERTBÄNKE

GROUND ANCHOR CONCRETE-IN, INSTALLATION DEPTH 250 MM



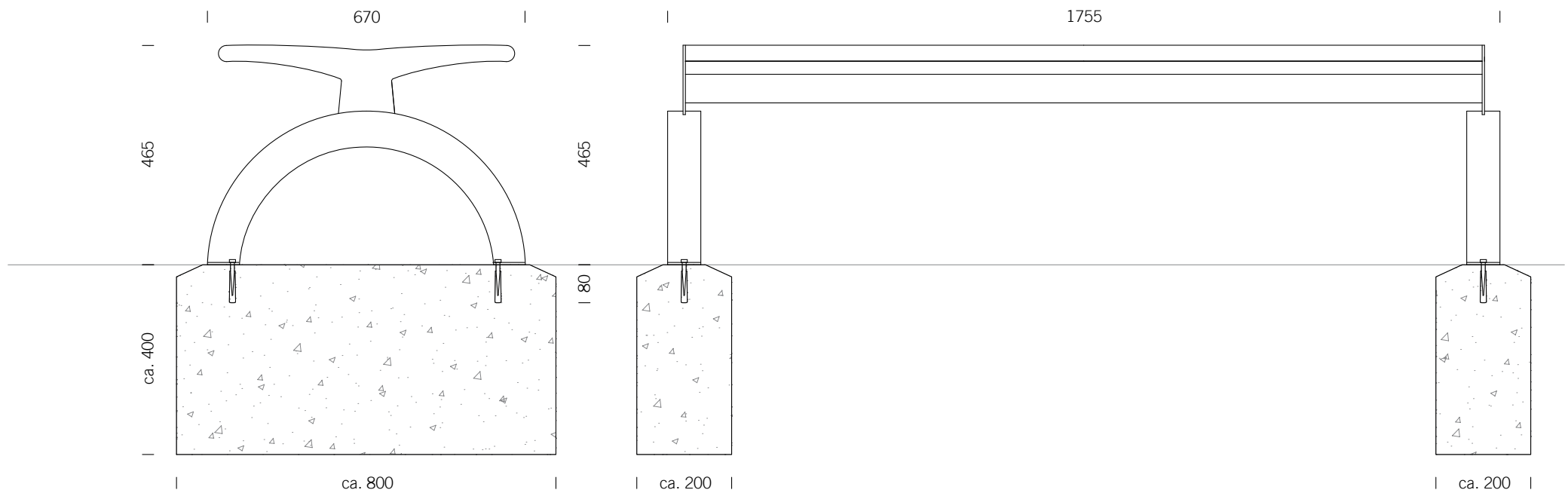
Foundations depend on local conditions - This is only a suggestion without warranty

SIARDO 140R

Stool bench

BENKERTBÄNKE

GROUND ANCHOR BOLT-ON, INSTALLATION DEPTH 80 MM



Foundations depend on local conditions - This is only a suggestion without warranty