

# CHALIDOR 400

Chair 610

BENKERTBÄNKE



# CHALIDOR 400

Chair 610

BENKERTBÄNKE

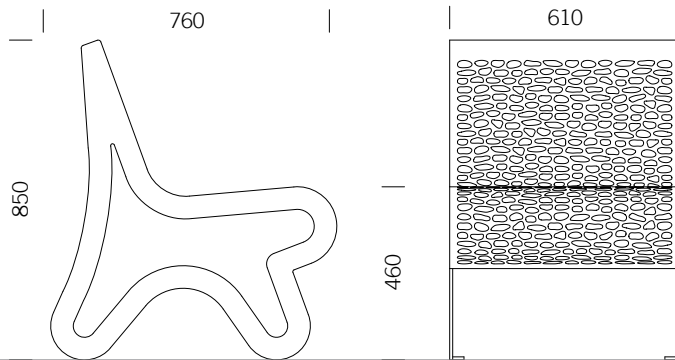




# CHALIDOR 400

Chair 610

# BENKERTBÄNKE



## GROUND ANCHOR

1. Concrete-in, installation depth 250 mm
2. Bolt-on, installation depth 80 mm

## DIMENSIONS

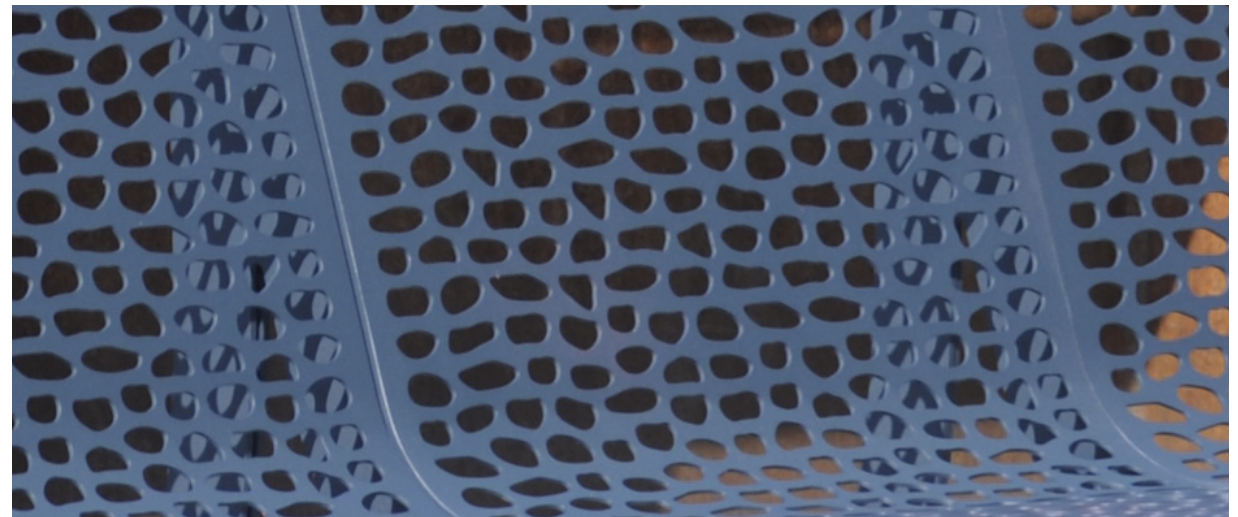
Length:	610 mm
Width:	760 mm
Height:	850 mm
Seat height:	460 mm
Weight:	23 kg

## FRAME

Stainless steel type 304 | powder-coated

## SEAT / BACKREST

Stainless steel type 304 | perforated plate

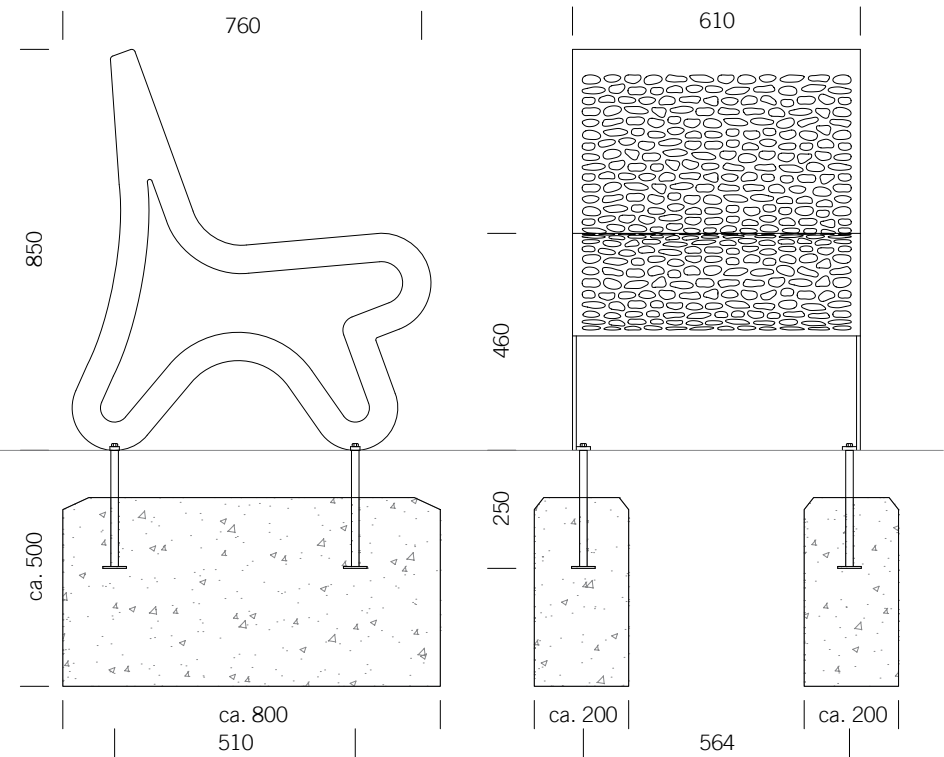


# CHALIDOR 400

Chair 610

# BENKERTBÄNKE

GROUND ANCHOR CONCRETE-IN, INSTALLATION DEPTH 250 MM



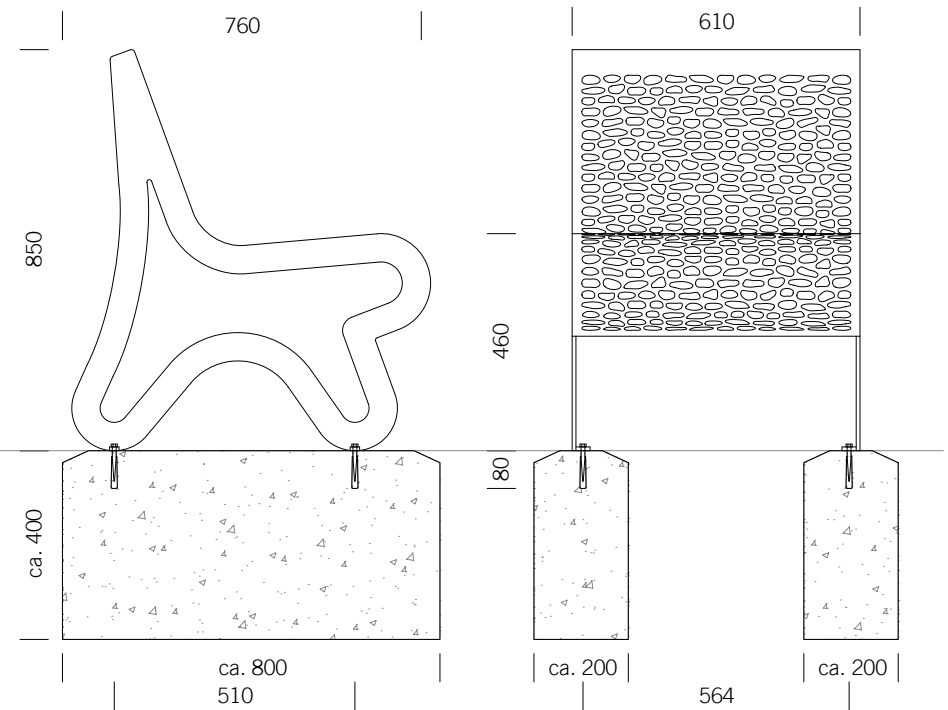
Foundations depend on local conditions - This is only a suggestion without warranty

# CHALIDOR 400

Chair 610

# BENKERTBÄNKE

GROUND ANCHOR BOLT-ON, INSTALLATION DEPTH 80 MM



Foundations depend on local conditions - This is only a suggestion without warranty